



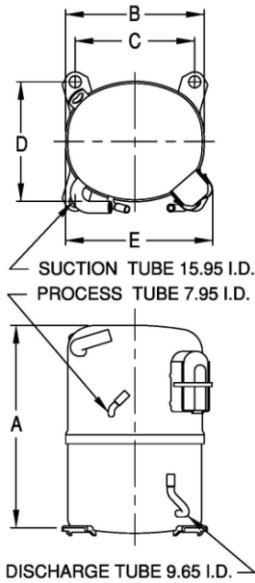
UNCONTROLLED COPY

KULTHORN KIRBY PUBLIC CO., LTD.

TECHNICAL SPECIFICATION

**HERMETIC
COMPRESSOR
AW 2495ZK-P
BOM ID 972-A3**

PRINCIPAL DIMENSIONS - mm



A	324
B	223
C	191
D	191
E	239

ELECTRICAL : 220-240 Volt. 50 Hz. 1 Phase

Nominal Performance

Cooling Capacity :	2,322	Watts (7,923)	BTU/Hr
	1,997	Kcal/Hr	
Power Input :	1,613	Watts	
Lock Rotor Amps :	56	Amps	
Rated Load Amps :	8	Amps	
COP (EER) :	1.44	W/W (4.91)	BTU/ W-Hr

Testing Conditions

Condensing Temperature :	54.4	° C
Evaporating Temperature :	-23.3	° C
Liquid Temperature :	32.2	° C
Return Gas Temperature :	32.2	° C
Ambient Temperature :	32.2	° C

Application

Evaporating Range :	LBP	@ -40 ° C to -12.2 ° C
Refrigerant :	R404A	
Expansion :	Capillary Tube	
Compressor Cooling :	Fan	

SCHEMATIC WIRING DIAGRAM

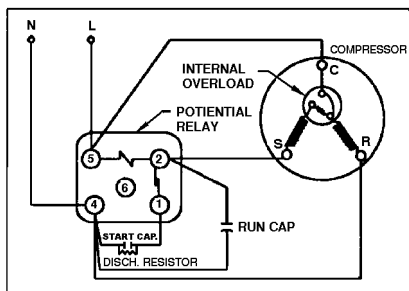
Compressor and Motor data

Compressor Type :	Reciprocating
Displacement :	53.5 cc.
Oil Type :	Polyolester Oil
Oil Charge :	1,067 cc.
Motor Type :	C.S.R. ; 2 Pole 2850 rpm
Voltage Range :	198-264 Volts 50 Hz.
Winding Resistance at 25 ° C	

Start :	5.00	Ohms
Run :	1.22	Ohms

Weight with Oil :	30.07	Kg.
Weight with Oil and Accessories :	30.30	Kg.

SCHEMATIC WIRING DIAGRAM C.S.R.



High Torque Start

Electrical Components

Motor Protector :

Type :	Internal Overload
Model Number :	KGE 656-2
Open / Close :	115-125 78-60 ° C
1st Cycle trip :	39 Amps (start) 73 Amps (main)

Motor Starter (CSR Only) :

Type :	Potential Relay
Model Number :	KGE 680-6 (GE3ARR3UX6A2)
Pick Up :	242-272 Volts.
Drop Out :	60-121 Volts.
Terminal Cover :	KGM 901-2

Start Capacitor (CSR Only) : 145-174 μ F 330 VAC.

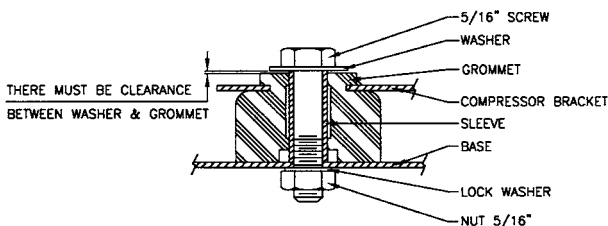
Disch. Resistor for Start Cap : 15000 Ohms 2 W

Run Capacitor : 25 μ F 440 VAC.

Mounting Kit

Rubber Grommet :	KGM 905
Sleeve Grommet :	KGM 903

MOUNTING KIT



Since we are constantly improving our product ,
the specification are subject to change without notice.

REV. DATE

19-07-10

C / N No.

0328/10